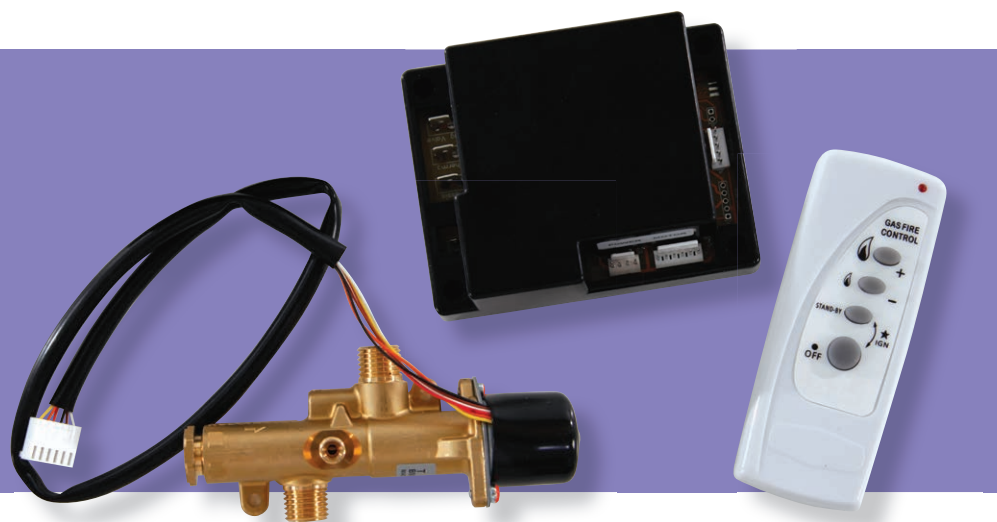


# TFC FIRE CONTROLLER



TEDDINGTON



## An advanced remote control system for installation in domestic gas fires

- Combined gas tap and flame supervision device
- Remote handset
- Range of heat putouts

- **Designed and manufactured in UK**
- **Small footprint**
- **Easy to install**
- **RF enabled**
- **Audible operation tones**
- **Automatic ignition sequence**
- **UK Patent Application No. 1402099.4**

## Application

The TFC is an advanced remote control system for installation in domestic gas fires.

## Physical Description

The TFC consists of:

### 1. Motorised valve

The TFC control is a combined gas tap and flame supervision device operated by a stepper motor.

### 2. Electronic Control Board (ECB)

Providing the interface between the motorised valve and remote handset the ECB manages valve functionality and output.

### 3. Remote Handset

The remote handset allows the end user full control of their fire from the comfort of their armchair. The Teddington team will be happy to consult and assist with the implementation and introduction of the TFC system onto an OEM's appliance.

## Operation

Following successful installation of the fire, press both buttons labelled ignition (or \*IGN) on the remote handset. The pilot flame will ignite, and once the system's safety protocols have been observed the main burner will automatically cross light.

The TFC provides a range of heat outputs, all selectable from the remote handset.

To turn the fire off, press the 'off' button once.

An audible operation and fault code system provides feedback to the user. Details of the audible codes are contained within the systems instructions which are provided with each delivery.

## Technical Specification

### Motorised Valve

Max. working pressure	100 mbar
Full on (high) flow rate	1200 l/hr AIR (min)@20mbar
Minimum (low) rate	Adjustable
Gas families	1st, 2nd & 3rd
Max. operating temp.	+80°C
Class	A
Group	1
Mounting position	Universal
Gas connection (Inlet)	To suit ø8mm pipe (M14x1 .5)
Gas connection (Outlet)	To suit ø8mm pipe (M14x1 .5)
Gas connection (Pilot)	To suit ø4mm pipe (M8x1)
Thermocouple connection	M9x1
Voltage supply	Via electronic control board
Motor leads	500mm
FSD (magnet unit)	Holding ≤200mA Drop out ≥80mA

### Electronic Control Board

Supply voltage	9Vdc
Max. operating temperature	+80°C (stable to 105oC)

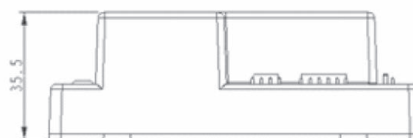
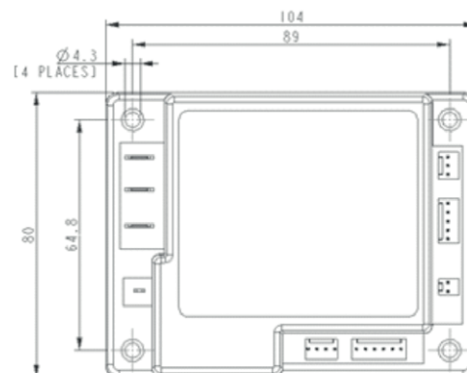
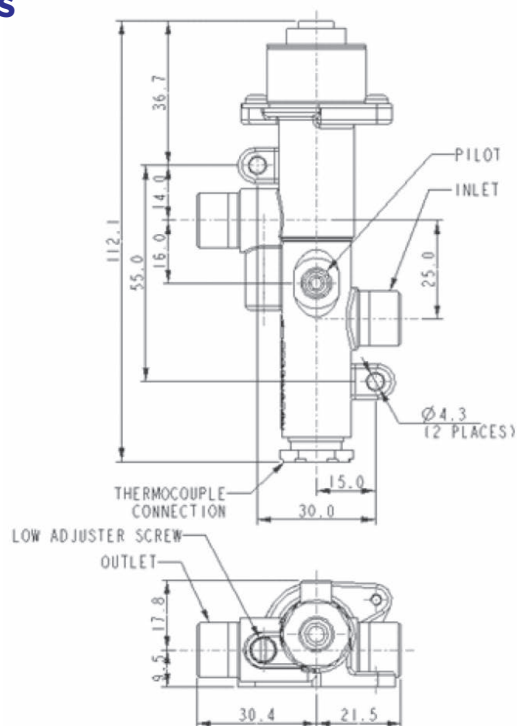
### Remote Control Handset

Supply voltage (IR)	3Vdc
Supply voltage (RF)	Economy - 3V - 2 x AAA Deluxe - 6V - 4 x AAA
Frequency	2.4GHz
Max. operating temperature	+50°C

### Certification

IR version Certificate No.	CE 604499
RF version Certificate No.	CE 692111

## Outline Details



2/18

Details and support available at  
[www.teddingtonsystems.co.uk](http://www.teddingtonsystems.co.uk) or call **01726 222 505**.  
 Manufactured by **Teddington Electronics Ltd.**

Part of the Teddington Group  
 Holmbush Industrial Estate  
 St Austell, Cornwall, PL25 3HG  
 United Kingdom



FM 538622

T +44 (0)1726 222505  
 E [enquire@teddingtonsystems.co.uk](mailto:enquire@teddingtonsystems.co.uk)  
[www.teddingtonsystems.co.uk](http://www.teddingtonsystems.co.uk)